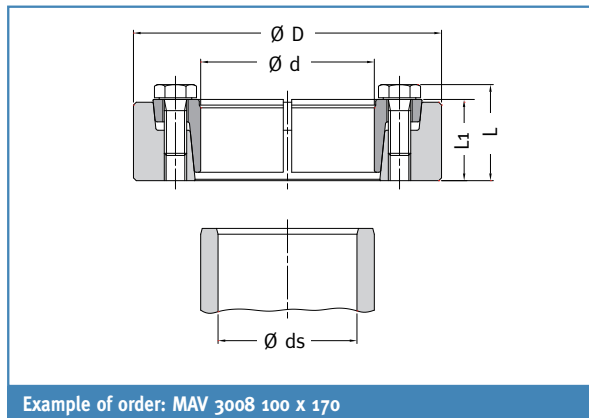
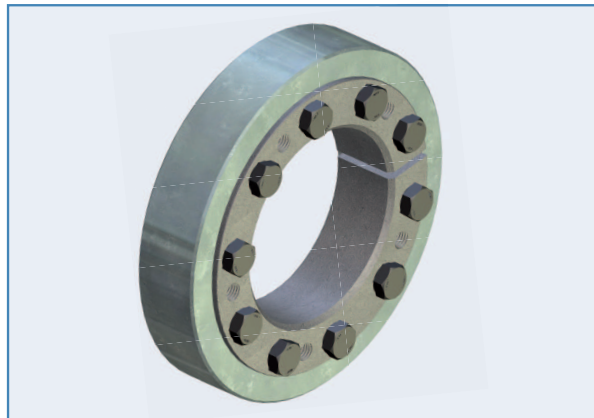


MAV 3008 MAV 3108 MAV 3208
 MAV 3009 MAV 3209

Standard Series



Example of order: MAV 3008 100 x 170

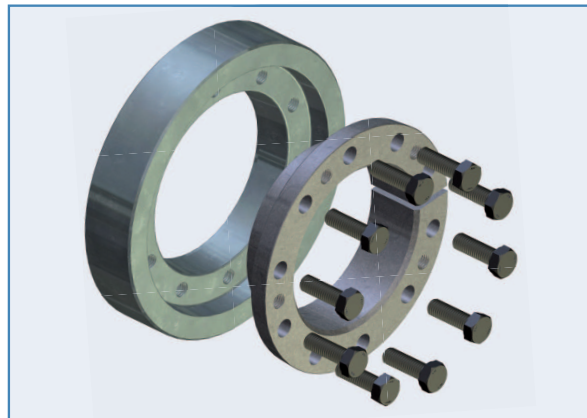
Composition

- Slotted inner ring, with integrated push-off threads
- Outer ring
- Set of hexagonal head cap screws, grade 10.9 (size $\lt M6$ of grade 8.8) for series MAV 3008 - MAV 3108 - MAV 3208; grade 12.9 for series MAV 3009 - MAV 3209
- Hardened washers DIN 6916 for units with screw size $\geq M16$

Features

- External locking device for hollow shaft (hub) - shaft connection
- Two-part design
- Self-releasing tapers, greased with MoS₂ ($\mu = 0.05$). Series MAV 3008 – MAV 3009 feature oiled tapers (self-locking) up to size 68x115
- Screws greased with MoS₂ ($\mu = 0.10$)
- MAV 3008 – MAV 3009: standard series, medium capacity
- MAV 3108: light series, low capacity
- MAV 3208 – MAV 3209: heavy series, high capacity
- Tolerances of shaft and hub bore: see table
- Tolerance of hub outer diameter: h8
- Surface finish of shaft and hub $Ra \lt 3.2 \mu m$
- Shaft – hub bore contact surface grease-free and dry ($\mu = 0.15$)

Shaft Diameter ds		ISO Tolerances	Max Clearance
from	to		mm
6	10	H6 - j6	0,011
11	18		0,014
19	30		0,017
31	50	H6 - h6	0,032
51	80	H6 - g6	0,048
81	120	H7 - g6	0,069
121	180		0,079
181	250		0,09
251	315		0,101
316	400		0,111
401	500		0,123



DIMENSIONS						SCREWS		FEATURES				WEIGHT kg
ds mm	d mm	x	D mm	L mm	L1 mm	size	Ma Nm	Mt Nm	Fax kN	Ps MPa	Ph MPa	
110								15.900	291	148	190	
120	140	x	215	53,5	46	M 12	100	21.000	350	163	190	7
125								23.400	376	168	190	
130								24.400	377	162	193	
135	155	x	245	53,5	46	M 12	100	27.500	408	169	193	9
140								30.700	439	175	193	
145								29.500	437	160	194	
150	165	x	263	61,8	53	M 14	160	32.900	471	166	194	12
155								36.600	505	172	194	
165								37.400	516	176	205	
170	175	x	275	61,8	53	M 14	160	41.200	550	181	205	13
175								45.300	585	186	205	
180								55.400	715	192	218	
185	185	x	290	70,8	62	M 14	160	60.500	756	197	218	17
190								65.800	798	201	218	
195	195	x	320	70,8	62	M 14	160	71.300	864	218	242	22
200								77.100	908	222	242	
205								83.300	952	226	242	
210	220	x	340	80	70	M 16	250	90.500	1.006	216	241	25
215								103.000	1.085	220	241	
220								117.000	1.179	227	241	
225								102.000	1.023	197	221	
230	240	x	370	80	70	M 16	250	116.000	1.108	204	221	29
235								123.000	1.151	207	221	
240								136.000	1.242	218	238	
245	260	x	405	80	70	M 16	250	153.000	1.330	223	238	35
250								161.000	1.375	226	238	
255								151.000	1.318	187	209	
260	280	x	430	92,5	80	M 20	490	169.000	1.410	192	209	46
265								187.000	1.504	196	209	
270								205.000	1.647	215	234	
275	300	x	460	92,5	80	M 20	490	225.000	1.733	218	234	53
280								247.000	1.835	222	234	
285								261.000	1.938	198	216	
290	320	x	485	104,5	92	M 20	490	286.000	2.049	202	216	68
295								313.000	2.162	205	216	
300								307.000	2.123	202	218	
305	340	x	520	104,5	92	M 20	490	335.000	2.234	205	218	80
310								363.000	2.345	209	218	
315								401.000	2.592	199	214	
320	360	x	570	117,5	105	M 20	490	432.000	2.703	201	214	116
325								467.000	2.831	205	214	
330								413.000	2.508	181	197	
335	390	x	590	117,5	105	M 20	490	446.000	2.625	184	197	116
340								479.000	2.742	187	197	
345								621.000	3.550	179	195	
350	420	x	630	155	140	M 24	840	666.000	3.702	182	195	177
355								713.000	3.856	184	195	
360								750.000	4.055	176	191	
365	370	x	660	167	152	M 24	840	801.000	4.219	178	191	213
370								854.000	4.383	181	191	
375								800.000	4.105	169	183	
380	440	x	690	167	152	M 24	840	852.000	4.261	171	183	233
385								901.000	4.396	172	183	
390								1.037.000	5.061	172	186	
395	480	x	720	189	174	M 24	840	1.101.000	5.246	174	186	292
400								1.167.000	5.432	176	186	
405								1.138.000	5.423	180	194	
410	500	x	745	189	174	M 24	840	1.206.000	5.611	182	194	310
415								1.348.000	5.992	186	194	

Code:	Fax: transmissible axial load with Mt=0 Nm
Ma: screws tightening torque	Ps: contact pressure on shaft
Mt: transmissible torque with Fax=0 kN	Ph: contact pressure on hub outer diameter