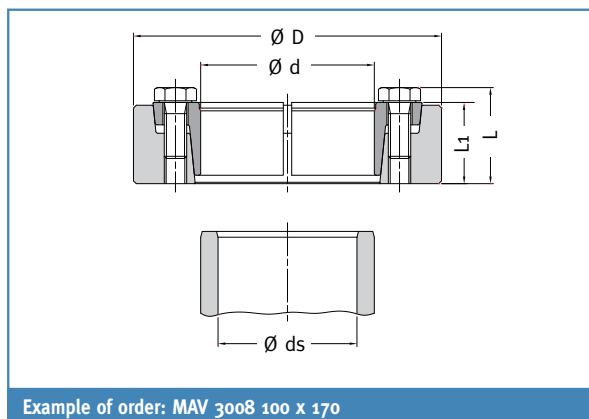
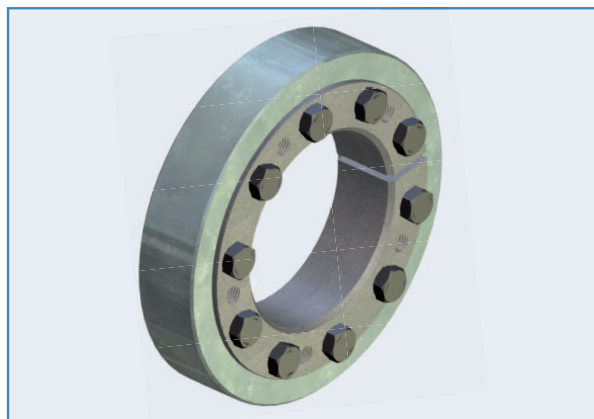


MAV 3008    MAV 3108    MAV 3208  
 MAV 3009    MAV 3209

Standard Series



Example of order: MAV 3008 100 x 170

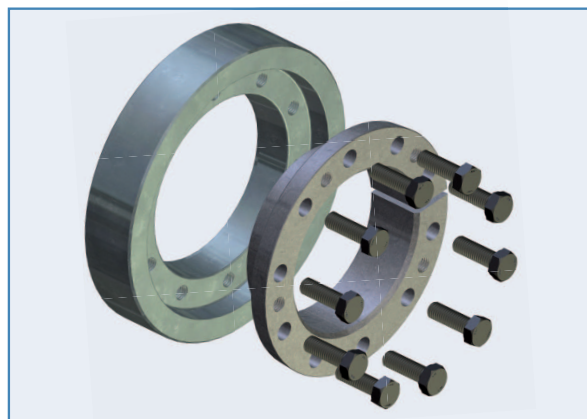
## Composition

- Slotted inner ring, with integrated push-off threads
- Outer ring
- Set of hexagonal head cap screws, grade 10.9 (size  $\lt M6$  of grade 8.8) for series MAV 3008 - MAV 3108 - MAV 3208; grade 12.9 for series MAV 3009 - MAV 3209
- Hardened washers DIN 6916 for units with screw size  $\geq M16$

## Features

- External locking device for hollow shaft (hub) - shaft connection
- Two-part design
- Self-releasing tapers, greased with MoS<sub>2</sub> ( $\mu = 0.05$ ). Series MAV 3008 – MAV 3009 feature oiled tapers (self-locking) up to size 68x115
- Screws greased with MoS<sub>2</sub> ( $\mu = 0.10$ )
- MAV 3008 – MAV 3009: standard series, medium capacity
- MAV 3108: light series, low capacity
- MAV 3208 – MAV 3209: heavy series, high capacity
- Tolerances of shaft and hub bore: see table
- Tolerance of hub outer diameter: h8
- Surface finish of shaft and hub  $Ra \lt 3.2 \mu m$
- Shaft – hub bore contact surface grease-free and dry ( $\mu = 0.15$ )

Shaft Diameter ds		ISO Tolerances	Max Clearance
from	to		mm
6	10	H6 - j6	0,011
11	18		0,014
19	30		0,017
31	50	H6 - h6	0,032
51	80	H6 - g6	0,048
81	120	H7 - g6	0,069
121	180		0,079
181	250		0,09
251	315		0,101
316	400		0,111
401	500		0,123



DIMENSIONS						SCREWS		FEATURES				WEIGHT kg
ds mm	d mm	x	D mm	L mm	L1 mm	size	Ma Nm	Mt Nm	Fax kN	Ps MPa	Ph MPa	
38	50	x	90	31,3	26	M 8	35	1.540	81	206	281	0,83
40								1.820	91	220	281	
42								2.130	102	233	281	
42	55	x	100	34,3	29	M 8	35	2.030	96	212	279	1,2
45								2.520	112	229	279	
48								3.070	128	246	279	
48	62	x	110	34,3	29	M 8	35	2.390	99	191	248	1,4
50								2.710	109	200	248	
52								2.870	110	196	248	
50	68	x	115	34,3	29	M 8	35	2.300	92	170	254	1,4
55								3.220	117	197	254	
60								4.300	143	220	254	
55	75	x	138	37,4	31	M 10	70	3.540	129	199	276	2,3
60								4.680	156	221	276	
65								5.990	184	241	276	
60	80	x	145	37,4	31	M 10	70	4.070	136	192	259	2,5
65								5.250	161	211	259	
70								6.580	188	228	259	
65	90	x	155	44,4	38	M 10	70	6.000	185	201	268	3,4
70								7.500	214	217	268	
75								9.180	245	231	268	
70	100	x	170	49,4	43	M 10	70	8.130	232	207	274	4,7
75								9.930	265	220	274	
80								11.900	298	233	274	
75	110	x	185	56,5	49	M 12	121	11.400	303	220	285	6,2
80								13.600	340	232	285	
85								15.100	355	227	285	
80	115	x	197	60,5	53	M 12	121	14.300	358	226	285	7,6
85								15.700	370	220	285	
90								18.600	414	232	285	
85	120	x	197	60,5	53	M 12	121	14.400	339	201	273	7,3
90								17.100	381	214	273	
95								20.100	423	225	273	
85	125	x	215	60,5	53	M 12	121	15.300	360	214	292	9,2
90								18.100	402	226	292	
95								21.200	446	237	292	
85	130	x	215	60,5	53	M 12	121	14.100	332	198	280	8,8
90								16.700	373	209	280	
95								19.600	414	220	280	
90	135	x	230	66,8	58	M 14	193	16.700	372	191	267	11
95								19.700	415	201	267	
100								22.900	458	211	267	
95	140	x	230	66,8	58	M 14	193	18.300	386	187	257	11
100								21.300	427	197	257	
105								24.600	469	206	257	
105	155	x	263	70,8	62	M 14	193	26.500	504	204	267	16
110								30.200	549	212	267	
115								34.100	594	219	267	
115	165	x	290	78	68	M 16	295	39.200	682	225	280	22
120								44.000	733	232	280	
125								48.000	768	233	280	
125	175	x	300	78	68	M 16	295	49.300	789	239	293	23
130								54.800	843	246	293	
135								60.500	897	252	293	
135	180	x	320	95	85	M 16	295	68.600	1.020	225	270	34
140								75.600	1.080	231	270	
145								83.100	1.150	236	270	
135	185	x	320	95	85	M 16	295	65.500	970	215	262	33
140								72.300	1.030	220	262	
145								79.400	1.100	226	262	
150	200	x	340	95	85	M 16	295	91.500	1.220	243	283	37
155								99.600	1.280	248	283	
160								108.000	1.350	252	283	

# MAV 3009

## Standard Series

DIMENSIONS						SCREWS		FEATURES				WEIGHT <sub>kg</sub>
ds mm	d mm	x	D mm	L mm	L1 mm	size	Ma Nm	Mt Nm	Fax kN	Ps MPa	Ph MPa	
160								124.000	1.560	234	275	53
165	220	x	370	115,5	103	M 20	570	135.000	1.630	238	275	
170								145.000	1.710	242	275	
180	240	x	405	119,5	107	M 20	570	151.000	1.780	241	281	66
190								174.000	1.930	248	281	
190								196.000	2.070	251	281	
200	260	x	430	131,5	119	M 20	570	199.000	2.100	227	265	81
210								227.000	2.270	234	265	
210								256.000	2.440	239	265	
230	280	x	460	144,5	132	M 20	570	258.000	2.460	218	250	104
230								290.000	2.640	223	250	
230								324.000	2.820	228	250	
240	300	x	485	155	140	M 24	980	356.000	3.090	234	261	120
250								395.000	3.290	238	261	
250								436.000	3.490	243	261	
240	320	x	520	155	140	M 24	980	359.000	2.990	217	245	139
250								397.000	3.180	221	245	
260								433.000	3.330	223	245	
260	340	x	570	170	155	M 24	980	487.000	3.900	247	275	191
270								529.000	4.070	248	275	
270								580.000	4.300	252	275	
260	350	x	580	174	159	M 24	980	515.000	3.960	231	260	200
270								565.000	4.180	235	260	
280								617.000	4.400	238	260	
280	360	x	590	174	159	M 24	980	625.000	4.470	242	266	205
290								680.000	4.690	245	266	
300								737.000	4.920	248	266	
300	390	x	650	183	166	M 27	1450	755.000	5.030	247	270	252
310								815.000	5.260	250	270	
320								873.000	5.460	251	270	
330	420	x	670	203	186	M 27	1450	953.000	5.780	226	248	288
340								1.024.000	6.020	229	248	
350								1.097.000	6.270	232	248	
340	440	x	740	211	194	M 27	1450	1.072.000	6.310	229	251	392
350								1.148.000	6.560	231	251	
360								1.228.000	6.820	234	251	
360	460	x	770	211	194	M 27	1450	1.218.000	6.770	232	252	423
370								1.299.000	7.020	234	252	
380								1.383.000	7.280	236	252	
380	480	x	800	231,7	213	M 30	1970	1.529.000	8.050	239	257	498
390								1.624.000	8.330	241	257	
400								1.722.000	8.610	243	257	
400	500	x	850	231,7	213	M 30	1970	1.632.000	8.160	230	247	575
410								1.718.000	8.380	231	247	
420								1.818.000	8.660	233	247	

**Code:**

Ma: screws tightening torque  
 Mt: transmissible torque with Fax=0 kN  
 Fax: transmissible axial load with Mt=0 Nm  
 Ps: contact pressure on shaft  
 Ph: contact pressure on hub outer diameter

